



2017



Inspired by Nature

Natural fibers are the inspiration for our latest collection of hats. Raw materials, such as raffia, abaca and seagrass, set a sturdy canvas for our designers to build upon. They then craft new fashions using unique trims, dyes and weaving processes. By carefully sourcing the best quality materials, our hats will retain their shape, color and style for years to come.

A hat can be a most versatile—and practical—fashion statement. Whenever possible, we design our hats with superior sun protection. We hope you enjoy our wide selection of colors, shapes and sizes.

Visit our website to learn more about us:
www.wallarohats.com

Contents:

THE "W" COLLECTION	4
WOMEN.....	24
PETITE	40
MEN.....	42
CHILDREN	50

The Skin Cancer Foundation Recommendation

The Skin Cancer Foundation recommends the material of every Wallaroo hat with a UPF rating and a 3" brim or wider as an effective UV protectant.



Wallaroo Sun Protection Commitment

Wallaroo Hat Company is committed to the elimination of skin cancer. The Wallaroo Sun Protection Commitment is a promise that each year we will donate 1% of our profits to skin cancer research, education and prevention in the United States.



We are a Certified B Corporation

We are part of a community of more than 1000 companies across 60 industries with one unifying goal: redefining success in business. We meet rigorous standards of performance, accountability and transparency, and are using the power of business as a force for good to address social and environmental issues, build strong local communities and great places to work. Learn more at bcorporation.net.



Beat the Rays with UPF 50+

Look for our sun icon throughout the catalog to determine which hats are UPF 50+. These fabrics are tested by the Australian Radiation Protection Agency and block 97.5% of the sun's ultraviolet rays. Ultraviolet radiation, or UV, is present in sunlight. The Ultraviolet Protection Factor (UPF) shows how well a fabric protects your skin from solar UV. Please remember, a Wallaroo hat only protects the skin it covers. Safeguard the rest of your body by wearing sunglasses and sunscreen.



The W Collection



Malibu

An elegant fedora creates a classic look for any occasion. We've dressed up this version with the sparkle of silver and gold-colored beads. 2¾" brim angles down for optimal shade. Inner drawstring adjusts fit. 100% raffia exclusive of trim. Do not wash. **MAL-30**

Available January 2017.



natural



new!

Our W Collection is comprised of natural fibers and classic silhouettes. A touch of color and a little bit of sparkle keep it interesting.



Hailey

Made from sustainable, natural raffia, this cowboy hat has a scaled-down 2¾" brim to flatter those with petite heads. Raffia string and suede cord give it a simple, casual style. Inner drawstring adjusts fit. 100% raffia exclusive of trim. Do not wash. **HAI-28**

Available January 2017.



natural



new!



Emma

This hat is guaranteed to inspire "oohs" and "aahs". The unique, ruffle paper braid gives the impression of lace. Extra-wide 5" brim is edged with plastic cord to hold its shape. Dark brown linen sash with wood buckle adds a bohemian flair. Inner drawstring adjusts fit. 100% paper braid exclusive of trim. Do not wash. **EMMA-28**

Available January 2017.



natural



new!



Tina

Everyone looks good in a woven cowboy hat! Our latest offering is all natural with a crocheted raffia crown wrapped in jute string twisted with wood beads. 3½" brim. Inner drawstring adjusts fit. 100% raffia exclusive of trim. Do not wash. **TIN-30**

Available January 2017.



natural



new!



St. Tropez Trilby

Using the same tri-toned hues as the St. Tropez, we've created a matching fedora for casual style with a kick. Internal drawstring adjusts fit. 100% paper braid. Spot clean. **STTR-24**

Available January 2017.



natural combo



orange combo



new!

UPF
50+



St. Tropez

Three tones of coordinating colors make a dramatic statement. The generous 4½" brim is perfect for maximum sun protection. Thin ribbon band at crown. Internal drawstring adjusts fit. 100% paper braid exclusive of trim. Spot clean. **STT-26**



orange combo



natural combo



UPF
50+



Nola

Inspired styling for hot Southern days. Wide 4" brim is angled just so, for a sophisticated silhouette. An internal drawstring adjusts fit. 100% paper braid exclusive of trim. Spot clean. **NOL-24**



black combo



brown combo



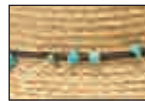
latte combo



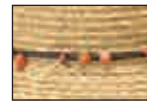


Blair

Raffia braid gives this playful bucket hat a more structured look. A brown cord accented with small stone beads adds a touch of color. 3½" brim. Internal drawstring adjusts fit. 100% raffia exclusive of trim. Do not wash. **BLA-28**



natural/
turquoise



natural/
orange



Catalina Cowboy

3" wire-edged brim for perfect shaping and an artsy mix of leather, colored string and beads. An internal drawstring adjusts fit. 100% raffia exclusive of trim. Do not wash. **CCOW-26**



natural



mushroom



ocean blue

*new
color!*

Catalina

Hand-woven from genuine raffia with a 4" brim to keep you cool. Twisted raffia band ties in a bow in the back. An internal drawstring adjusts fit. 100% raffia. Do not wash. **CAT-22**

New color available January 2017.



natural



mushroom

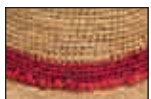




Raffia is soft, pliable, strong, durable, and easy to dye — making it an excellent material for weaving hats. We use high-quality Madagascan raffia which contains a resin that prevents cracking and brittleness.

Tahiti Cowboy

The 3¼" wire-edged brim lets you adjust the hat just the way you like it. An internal drawstring adjusts fit. 100% raffia exclusive of trim. Do not wash. **TCOW-26**



red



turquoise



taupe



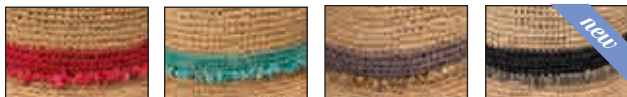


*new
color!*

Tahiti

The hip, city sister to the Tahiti Cowboy. 1¾" brim. An internal drawstring adjusts fit. 100% raffia exclusive of trim. Do not wash. **TAH-26**

New color available January 2017.



red

turquoise

taupe

black





Native to the Phillipines, the abaca plant is the source of the strongest of the natural fibers.

Also known as Manila hemp, abaca fiber is highly valued for its fine texture.

Milan

Crafted from lustrous abaca fiber, this elegant hat possesses a unique silky feel. The gold and silver beaded trim adds a touch of shine. 4½" brim. Internal drawstring adjusts fit. 100% abaca braid exclusive of trim. Spot clean. **MIL-54**



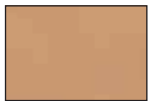
natural





Catriona

A wide-brimmed fedora hat in soft brushed felt surrounds you with 4" of sun protection. Matching ribbon band. Internal drawstring adjusts fit. 100% felt exclusive of trim. Spot clean. **CAT-R28**



camel



grey

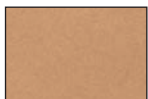


black



Elsbeth

The soft felt fabric of this graceful capeline hat makes for a refined silhouette. Wide 4" brim and a slender band of faux black leather around the crown. Internal drawstring adjusts fit. 100% felt exclusive of trim. Spot clean. **ELS-28**



camel



grey



black





Napa

The 4¾" wide capeline-style brim will keep you cool. The brown waxed cord is tied with red wooden beads. An internal drawstring adjusts fit. 100% raffia exclusive of trim, with a cotton lining. Do not wash. **NAP-26**



natural



Morgan

The 3½" brim will shade you from the sun, and the fine raffia weave will keep you cool and refreshed. Black grosgrain ribbon band and cotton lining. An internal drawstring adjusts fit. 100% raffia exclusive of trim. Do not wash.

MOR-26



natural





Sabrina

Shell and stone beads add a beachy touch to this relaxed capeline hat. The chunky weave and wire edge allows for easy shaping of the wide 4¼" brim. Internal drawstring adjusts fit. 100% raffia exclusive of trim. Do not wash. **SAB-28**



natural



mushroom



*new
color!*

Bianca

Our glammed-up visor can be worn to the best beach and country clubs in town. 3½" brim with gold-edged suede ribbon at the crown. Velcro strap adjusts fit. 100% paper braid exclusive of trim. Spot clean. **BIA-15**

New color available January 2017.



black



natural





Tia

A clever two-toned trilby with a 1¾" brim. Black ribbon detail at the crown. Internal drawstring adjusts fit. 100% paper braid exclusive of trim. Spot clean. **TIA-24**



tan/black



Georgia

This 4" brim will be turning heads! Dyed-to-match grosgrain ribbon around the crown dresses it up and an internal drawstring adjusts fit. 100% waxed paper braid exclusive of trim. Spot clean. **GEO-24**



natural



black



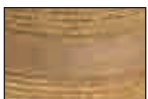
burnt orange





Celeste

This 5" wire-edged adjustable brim can be worn up or down—or both! Matching suede band and trim. An internal drawstring adjusts fit. 100% paper braid exclusive of trim. Spot clean. **CEL-26**



natural



Julia

The 4½" turned-up brim in the front narrows to 3½" in the back. Edged with black trim to complement the Audrey Hepburn-inspired polka dot chiffon scarf. An internal drawstring adjusts fit. 100% paper braid exclusive of trim. Spot clean. **JUL-24**



natural/black





Savannah

A 5" wire-edged brim offers maximum shade in dramatic style. Rolls up for packing. An internal drawstring adjusts fit. 100% paper braid. Spot clean.

SAV-26



black/
camel stripes

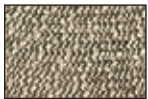


camel/
black stripes



Josie

Classic fedora style with a 3" wire-edged brim and a black ribbon band. An internal drawstring adjusts fit. 100% paper braid exclusive of trim. Spot clean. **JOS-22**



mixed black



white/beige

UPF
50+



Sierra

Different neutral tones are woven together, then accented with a buckle tied on with a leather cord. 3 1/4" shapeable brim. An internal drawstring adjusts fit. 100% paper braid exclusive of trim. Spot clean. **SIE-24**



mixed brown



natural

UPF
50+



Women's Collection



Harper

Make waves—literally AND figuratively—with this dramatic folded ribbon hat. 4¼" brim is edged with a micro-wire for complete shaping control. Faux leather trim. Packable. An internal drawstring adjusts fit. 100% poly-ribbon. Handwash cold. **HAR-22**

Available January 2017.



new!



white



camel



cranberry



black

For everyday sun protection, our women's collection offers a huge variety of colors, styles and materials to suit any occasion.



Kristy

Structured for a classic look, this 3"-brimmed fedora has lasting style. An internal drawstring adjusts fit. 100% poly-propylene.

Spot clean. **KRI-22**

Available January 2017.



new!



ivory/ice blue



ivory/black





Taylor

A golf hat with a twist. Criss-crossed fabric adds interest without distraction. 2¾" brim provides ample shade. Matching cotton chin strap is removable, and an internal drawstring adjusts fit. 100% cotton. Handwash cold. **TAY-22**
Available January 2017.



new!



white



tan



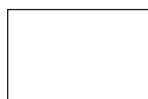
navy



Aqua Hat

Hit the beach or the waves with the security of water-safe, wrap-around sun protection. Matching chin strap is removable. 3½" brim. Stretches to fit. Packs flat. 100% Lycra®. Handwash cold. **AQUH-20**

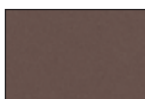
Hat with chin strap available January 2017.



white



turquoise



mocha



black

*new
chin strap!*



*Our aqua hats & visors are water-friendly
— perfect for the pool or the beach.*



Aqua Visor

Quick-drying and lightweight fabric lets you enjoy any water activity without leaving your hat behind. 4" brim. Tie in back adjusts to any size. Packs flat. 100% Lycra. Handwash cold. **AQU-14**



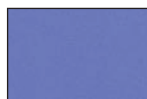
white



hot pink



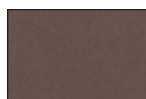
turquoise



hydrangea



navy



mocha



black





Victoria

The straw hat goes modern with the ultra-lightweight Victoria. 3½" shaped brim. An internal drawstring adjusts fit. Packable. 100% poly-straw. Handwash cold. **VIC-20**



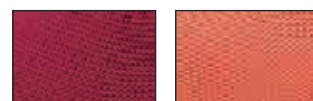
white

natural



light pink

hot pink



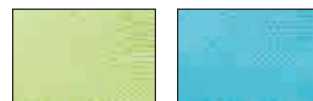
cranberry

coral



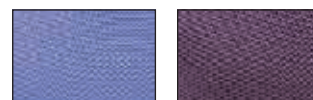
lemon

seafoam



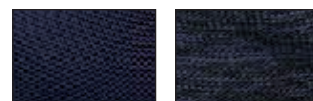
lime

turquoise



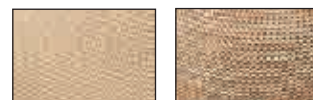
hydrangea

deep lilac



french navy

mixed navy



tan

mixed camel



suede

black



*new
color!*

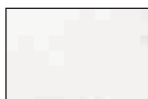
Our Victoria hats are made from an ultra-lightweight poly-straw. Perfect for all-day wear, they are great for travel and are available in a wide range of vibrant colors and styles.

Victoria Diva

Featuring the same round crown as the original Victoria, the Diva version goes for a more elegant look with its wider 4½" brim. An internal drawstring adjusts fit. Packable. 100% poly-straw. Handwash cold.

VICD-20

New color available
January 2017.



white



natural



mixed camel



tan



black



Victoria Fedora

Another Victoria hat to love! A fedora with a 3" brim and matching cord trim. An internal drawstring adjusts fit.

100% poly-straw with cotton lining. Spot clean. **VICF-20**

New color available January 2017.



suede



black



white



natural



mixed camel



tan





Victoria Two-Toned

Two coordinating fabric colors band together for a flattering, colorful look. 4" brim and cotton lining. An internal drawstring adjusts fit. Packable. 100% poly-straw. Spot clean.

VICTWO-20



white/natural



beige/mocha



lime/turquoise



camel/black



*new
color!*



Gigi

A touch of whimsy plays up this trendy trilby. 2" brim with ribbon around crown. Light cotton lining. An internal drawstring adjusts fit. 100% paper cloth exclusive of trim. Spot clean. **GIG-20**

New color available January 2017.



natural with
polka dot ribbon



natural with
black ribbon



Trilogy Trilby

The trilby style is so versatile, the whole family can wear it! With its neat 1¾" brim and navy and white striped ribbon accent, it will suit any occasion. An internal drawstring adjusts fit. 100% paper braid exclusive of trim. Spot clean.

Women's (58cm) **WTRI-22**

Men's (61cm, see p. 48) **MTRI-22**

Children's (55cm, see p. 58) **CTRI-22**



natural/navy



Naples

This fun, colorful fedora features a 3" wire-edged brim and leather trim. An internal drawstring adjusts fit. 100% paper braid exclusive of trim. Spot clean. **NAPL-22**

New color available January 2017.



ivory



camel



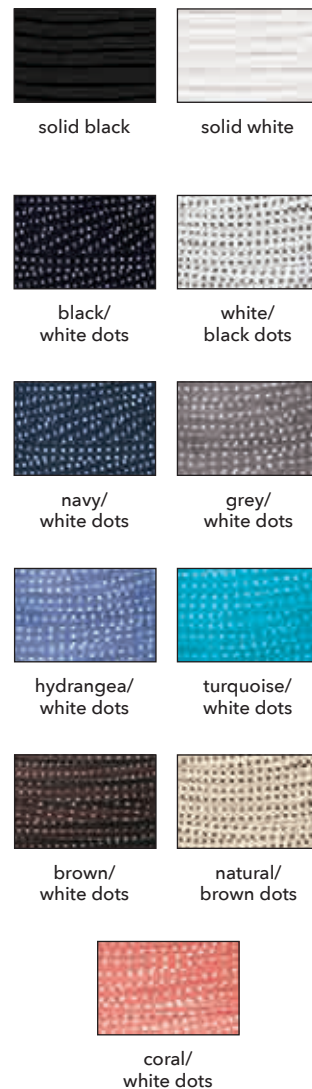
orange



hot pink



black



Scrunchie

The 4½" wire-edged brim can be adjusted to match every mood—down for shy or curvy waves for fun and flirty. An internal drawstring adjusts fit. Crushable. 100% polyester. Handwash cold. **SCR-22**



Many of our hats travel with ease. Some pack flat, some roll up, and some—like the Casual Traveler and the Scrunchie—can even be crushed and stuffed in a bag!



Casual Traveler

The hat that started it all! This casual, summer style has a 4" adjustable brim that can be worn up or down. An internal drawstring adjusts fit. Crushable. 100% microfiber. Handwash cold. **CAST-20**



white

natural

camel

hydrangea



seagreen

hot pink

navy

black





Ellie

This versatile ribbon weave is so flattering. 3" brim with a wooden bead and shell trim. An internal drawstring adjusts fit. Rolls up for packing. 100% poly-ribbon exclusive of trim. Spot clean. **ELL-20**



seafoam



white



natural



chocolate



black





Frankie

A classic fedora shape lightened up for summer in an airy, braided weave. 3" wire-edged brim with a contrasting grosgrain ribbon. An internal drawstring adjusts fit. 100% poly-propylene. Spot clean. **FRA-22**



white/
black ribbon



natural/
brown ribbon



Naomi

Natural woven fibers in earthy shades of brown. 3" brim with a wooden bead trim. An internal drawstring adjusts fit. Rolls up for packing. 100% paper braid exclusive of trim. Spot clean. **NAO-20**



mixed brown



natural



charcoal





Breton

Contrasting poly-ribbon braids bring a punch of color to any outfit. 4" brim can be worn up or down. Natural wooden-beaded leather tie. An internal drawstring adjusts fit. Rolls up for packing. 100% poly-ribbon exclusive of trim. Spot clean. **BRE-20**



white/black



ivory



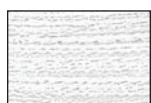
chocolate



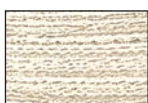
red



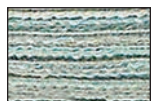
black



white



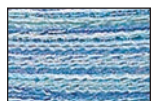
ivory



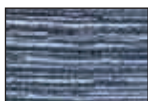
seafoam



red



light blue



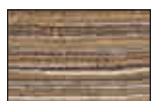
denim



light brown



brown



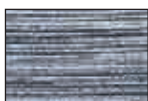
camel



sienna



black



black/white



Sydney

The Sydney is made with fibers of matching colors woven together into a thin, breathable polyester braid. The classic version has a 3¾" brim with stylish turned-up edges. An internal drawstring adjusts fit. Rolls up for packing. 100% poly-braid. Handwash cold. **SYD-20**

*new
color!*

Petite Collection

Our regular women's hats have a 58cm crown, which can be a little roomy for some. These styles have been scaled down with a smaller crown and brim for petite sizes.

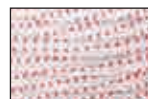
UPF
50+



Petite Scrunchie

3½" brim, 55cm crown. Crushable. 100% polyester. Handwash cold. **PSCR-15**

New color available
January 2017.



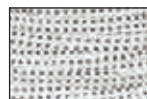
white/
pink dots



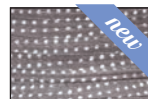
fuchsia/
white dots



turquoise/
white dots



white/
black dots



grey/
white dots



navy/
white dots



black/
white dots

*new
color!*



Petite Victoria

3" brim, 55cm crown. Packable. 100% poly-straw. Handwash cold. **PVIC-15**

New color available
January 2017.



white



natural



tan



mixed camel



coral



hydrangea



black

Hat Racks

Presentation is everything! An effective store display drives up sales by drawing shoppers' attention, and a fully stocked Wallaroo hat stand perfectly shows off our wide selection of styles and colors.

Our full-size stand is ideal for the front of the store, while the smaller counter stand encourages last-minute purchases and is perfect for our visors or children's hats.

Ask our sales team about the best merchandising options for your store.

Counter Stand

Displays up to 15 visors or children's hats.

Wood laminate. 18"L x 9"W x 19"H. **CSTAND-75**



Floor Stand

20 pegs can hold 20-40 hats. Wood laminate. 18"L x 18"W x 80"H.

FSTAND-110



Men's Collection



Charleston

Perfect for a weekend getaway, this twisted seagrass hat is island inspired. Removable chin strap with adjustable toggle. Detailed with metal eyelets and a suede band. 3" brim. Inner drawstring adjusts fit. Sizes: M/L (59cm) and L/XL (61cm). 100% seagrass with a cotton lining. Spot clean. **CHAR-24**

Available January 2017.



natural



new!

Elevate your wardrobe beyond baseball caps with these classic shapes. Our men's hats have wide brims for excellent sun protection and styles to fit every occasion.

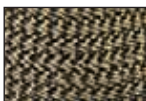


Palmer

This lightweight fedora is great for travel – just fold it in your suitcase and go. It bounces right back! 3 ½" brim with a black ribbon trim. An internal drawstring adjusts fit. Sizes: M/L (59cm) and L/XL (61cm). 100% paper braid exclusive of trim. Spot clean. **PAL-24**



natural



black/natural

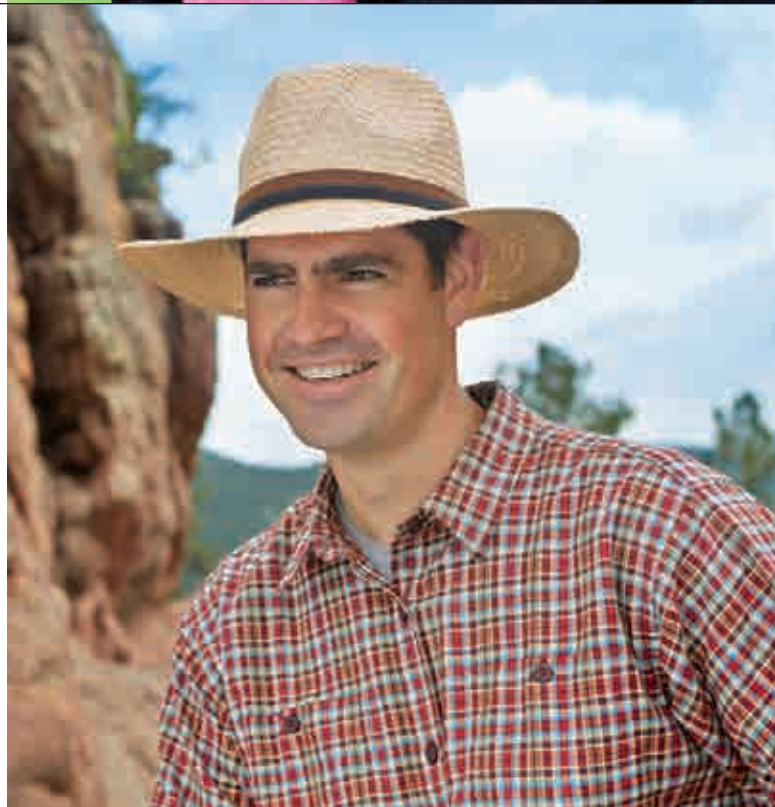


Byron

Sophisticated structure for summer style. 3" brim, suede and ribbon band. An internal drawstring adjusts fit. Sizes: M/L (59cm) and L/XL (61cm). 100% palm fiber exclusive of trim. Do not wash. **BYR-24**



natural





Cameron

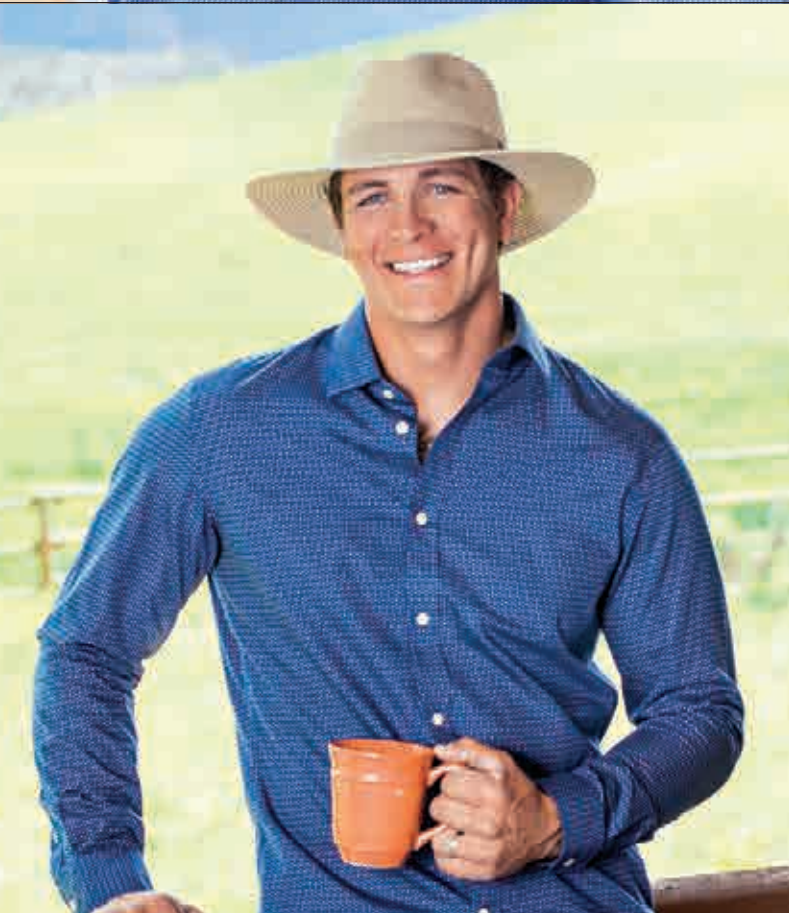
Fedora-style design for a classic look. 3" brim with a thin belt around the crown. An internal drawstring adjusts fit. Sizes: M/L (59cm) and L/XL (61cm). 100% poly-propylene braid exclusive of trim. Spot clean. **CAM-22**



natural



ivory



Hamilton

Gentlemanly sophistication makes this hat perfect for Sunday brunch. 3" structured brim creates a clean silhouette. An internal drawstring adjusts fit. Sizes: M/L (59cm) and L/XL (61cm). 100% polyester ribbon exclusive of trim. Spot clean.

HAM-24



beige



red/white/blue





Blake

Zig zag stitching adds a modern touch to a classic look. The sturdy 3¼" brim offers ample shade for every summer adventure. Black ribbon detail. Internal drawstring adjusts fit. Sizes: M/L (59cm) and L/XL (61cm). 100% paper braid exclusive of trim. **BLAK-24**

Available January 2017.



natural



new!



Jackson

With a breathable mesh crown, this packable hat will keep you cool all summer. 3" brim. An internal drawstring adjusts fit. Sizes: M/L (59cm) and L/XL (61cm). Packs flat. 100% microfiber and ventilated mesh. Handwash cold. **JAC-20**



camel



Jasper

This lightweight cowboy hat will keep you cool on the hottest day. 3" brim and adjustable chin strap. Sizes: M/L (59cm) and L/XL (61cm). An internal drawstring adjusts fit. 100% poly-ribbon. Handwash cold. **JAS-20.**



brown check



beige



Shelton

After numerous requests, we've added an outdoor hat with an 8½"-long flap for complete neck protection. Perfect for all-day events like fishing, hiking, or watching a baseball game. A Velcro pocket in the brim stows the flap when not needed. Adjustable chin strap. An internal drawstring adjusts fit. Sizes: M/L (59cm) and L/XL (61cm). 100% cotton. Handwash cold. **SHE-24**

Available January 2017.



camel/navy



new!



Outback

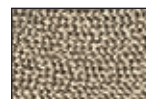
A modern fedora to dress him up in class. 3" brim, brown suede band. An internal drawstring adjusts fit. Sizes: M/L (59cm) and L/XL (61cm). 100% paper braid exclusive of trim. Spot clean. **OUT-22**



brown



natural



black



Trilogy Trilby

The trilby style is so versatile, the whole family can wear it! With its neat 1¾" brim and navy and white striped ribbon accent, it will suit any occasion. An internal drawstring adjusts fit. 100% paper braid exclusive of trim. Spot clean.

Men's (61cm) **MTRI-22**

Women's (58cm, see p. 32) **WTRI-22**

Children's (55cm, see p. 58) **CTRI-22**



natural/navy


 UPF
50+


Explorer

There's no adventure this hat can't handle. Wide, microfiber 3" foam brim allows the hat to float in the water. Water repellant, lightweight, crushable, and packable. Chin strap. An internal drawstring adjusts fit. Sizes: M/L (59cm) and L/XL (61cm). Packs flat. 100% microfiber. Handwash cold.

MEXP-20



camel/navy



natural/camel

Jr. Explorer

Kid's version has a 2½"-3½" front and back. 56cm fits ages 5-12. Packs flat. 100% microfiber. Handwash cold. **JREXP-13**



camel/navy



Children's Collection



Kiwi

Extra long 3 1/2" back brim completely covers your infant's head and neck. Velcro chin strap. 43cm hat fits newborn to 6 months. Crushable. 100% cotton. Handwash cold. **KIW-10**



pink dots



beige stripes



blue stripes



Lorikeet

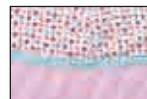
Protect delicate infant skin from the sun's harsh rays. Velcro chin strap, terry lined. 46cm hat fits 3 to 12 months, 2" brim. Crushable. 100% cotton. Handwash cold. **LOR-10**
New color available January 2017.



white eyelet



white/blue



pink polka dots



blue daisies

*Children need to learn about sun protection early so they can develop life-long healthy habits.
Our complete line of comfortable, colorful hats covers newborns to teens.*



Aloha Hat

An adorable bucket hat in a cheeky island-inspired pattern. Say "goodbye" to sunburns! 2" brim. 46cm fits ages 3-12 months. Crushable. 100% cotton. Handwash cold. **ALO-12**

Available January 2017.



denim blue



new!



new!

Microfiber Platypus

We've added this water-resistant, quick-dry version of the Platypus for beach and pool play dates. 2¼"-3¼" brim, matching velcro chin strap. 49cm fits ages 1-2½ years. Crushable. 100% microfiber. Handwash cold.

MPLA-12

Available January 2017.



aqua



pink



*new
color!*



Platypus

Extra-wide brim provides added protection for active toddlers. 2¼"-3¼" brim, velcro chin strap. 49cm fits ages 1-2½ years. Crushable. 100% cotton. Handwash cold. **PLA-12**

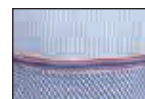
New color available January 2017.



fuchsia dots



lavender dots



seersucker



pink roses

new



Croc & Shark

Clever cut-outs up the cute factor on these adorable embroidered hats. 3¼" brim provides plenty of shade for outdoor summer fun. Cotton chin strap. Crushable. An internal drawstring adjusts fit. 100% cotton exclusive of trim. Handwash cold.

52cm

Toddlers love that something has taken a "bite" out of their hat! 52cm fits ages 2-5 years.

Pink Crocodile **CRO-14**

Shark **SHA-14**

Green Crocodile **GCR-14**



pink crocodile



blue shark



green crocodile

55cm

Our toddler version is so popular, we've been asked to make it for older kids, too! 55cm fits ages 5-10 years.

Pink Crocodile **CRO55-14**

Shark **SHA55-14**



pink crocodile



blue shark





*new
size!*

Petite Nantucket, 52cm

A more petite Petite Nantucket for little girls who want to be like big sis. 2½" brim. 52cm fits ages 2-5 years. Crushable. An internal drawstring adjusts fit. 100% poly-ribbon. Handwash cold. **PNAN52-13**
Available January 2017.



rainbow tones



jewel tones



new!



Petite Nantucket, 54cm

Brightly colored ribbons are sewn together to create brilliant patterns. 2½" brim. 54cm fits ages 4-8 years. Crushable. An internal drawstring adjusts fit. 100% poly-ribbon. Handwash cold. **PNAN-13**



rainbow tones



fuchsia tones



aqua tones



hot pink tones



lilac tones



Surf Hat

Colorful, water-friendly hat with 3" brim and chin strap. 55cm fits ages 5-12 years. Reverses to solid matching color. Crushable. 100% microfiber. Handwash cold. **SUR-13**



hibiscus/pink



surf blue/grey





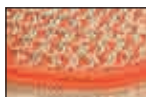
Lulu

Sassy and stylish trilby fedora for girls. The alternating weave of color and natural straw coordinates with the matching, macrame-style knot. 2" brim. 54cm fits ages 4-8 years. An internal drawstring adjusts fit. 100% paper braid exclusive of trim. Handwash cold. **LULU-15**

Available January 2017.



pink



orange



new!



Sophia

Charming, appliquéd hat with a wrap-around 3" brim. 54cm fits ages 4-8 years. Inner drawstring adjusts fit. 100% cotton. Handwash cold. **SOP-14**



lilac dragonfly



white butterfly



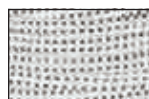
pink bird



Petite Scrunchie

Modeled after our popular women's hat, this scaled-down version sports a 3½" brim. 55cm fits ages 5-12 years. Crushable. An internal drawstring adjusts fit. 100% polyester. Handwash cold. **PSCR-15**

New color available January 2017.



white/black



white/pink



fuchsia/white



turquoise/white



navy/white



black/white



grey/white

*new
color!*





Trilogy Trilby

The trilby style is so versatile, the whole family can wear it! With its neat 1¾" brim and navy and white striped ribbon accent, it will suit any occasion. An internal drawstring adjusts fit. 100% paper braid exclusive of trim. Spot clean.

Children's (55cm, fits ages 5-12 years) **CTRI-22**

Women's (58cm, see p. 32) **WTRI-22**

Men's (61cm, see p. 48) **MTRI-22**



natural/navy





Bailey

Bold, colorful stripes adorn this delightful bucket hat. 2½" brim. 55cm fits ages 5-12 years. Crushable. An internal drawstring adjusts fit. 100% cotton with a twill lining. Handwash cold. **BAI-14**



fuchsia/orange



grey/blue



PRSR STD
U.S. POSTAGE
BOULDER CO
PERMIT NO. 34

WALLAROO HAT COMPANY

3155 Sterling Circle
Boulder, Colorado 80301
TEL: 303-494-5949
TOLL FREE: 1-888-925-2766
FAX: 303-245-8720
www.wallaroothats.com



©2016-2017 by Wallaroo Hat Company, LLC. All rights reserved.



The Tina cowboy hat, see page 7.